



ماهان موتور آریا

MAHAN MOTOR ARIA

GLOBAL VIBRATION SYSTEM SOLUTIONS EXPERT



www.mahanmotor.com



Quality comes from details Details determine success or failure
To give the brand a world level , the requirements for products must
have an international standard

WORKSHOP AND PRODUCTION EQUIPMENTS



Features

RELIABILITY

PTC thermistor 180 degrees
Specific grease retaining device
Tropicalised standard
IP66 protection
Class F insulation

FLEXIBILITY

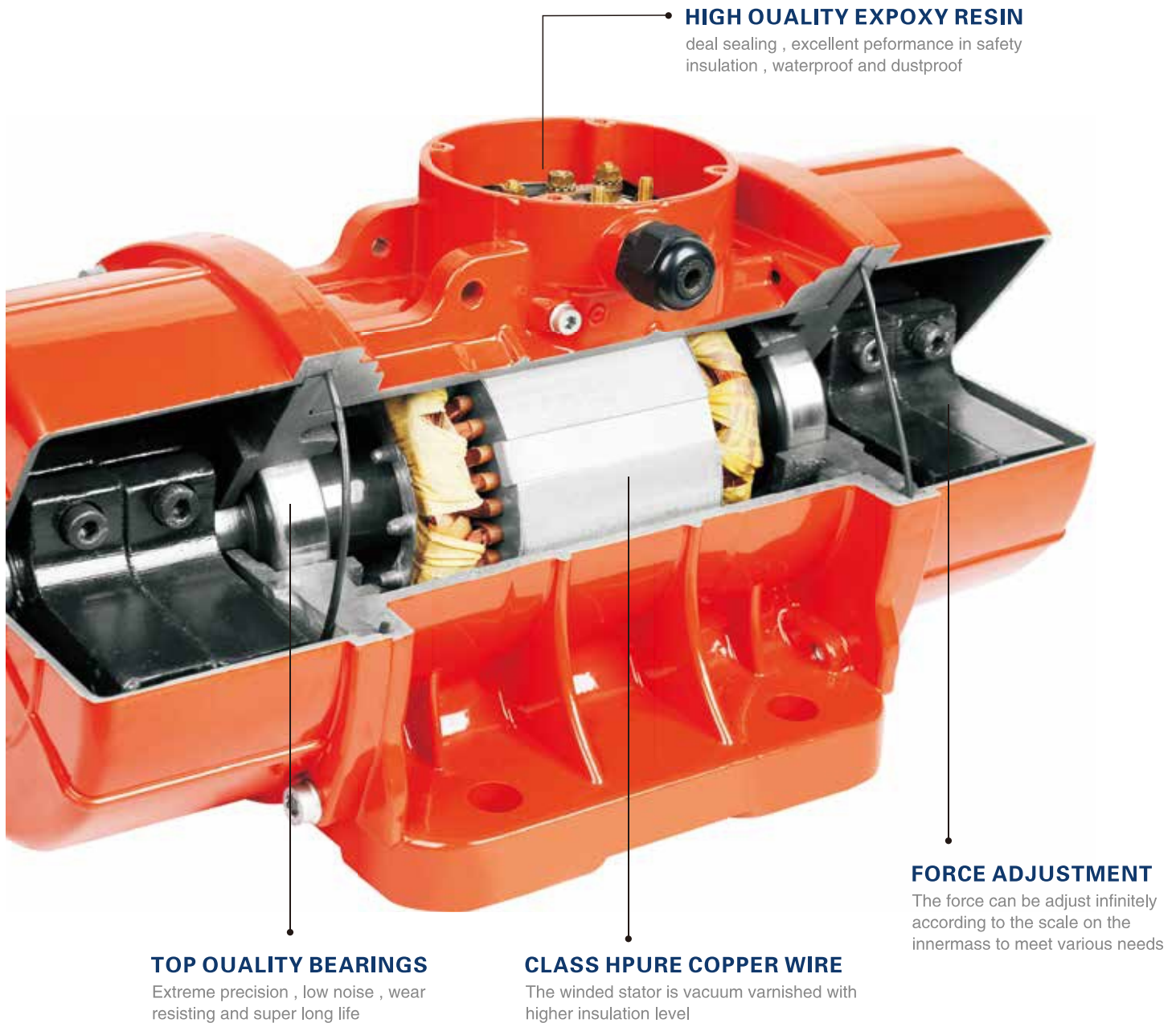
Easy mass adjustment
Various voltages and frequencies available
Easy access to the terminal box
Multiple eye-bolts

QUALITY

World class materials
Durable sealing
Premium bearings
Strong body design - FEM designed
Vacuum insulation
3D quality check

EFFICIENCY

Optimised power and Weight ratio
SI continuous duty service
Optimized electric design



HIGH QUALITY EXPOXY RESIN

deal sealing , excellent peformance in safety insulation , waterproof and dustproof

TOP QUALITY BEARINGS

Extreme precision , low noise , wear resisting and super long life

CLASS HPURE COPPER WIRE

The winded stator is vacuum varnished with higher insulation level

FORCE ADJUSTMENT

The force can be adjust infinitely according to the scale on the innermass to meet various needs



INDUSTRIAL VIBRATION MOTOR (MV STANDARD SERIES) APPLICATION AND CASES

It is widely used in vibrator feeder , construction materials , sand/cement screening,material milling , flow conveyor , vibration separator , hopper emptying , bin activator, etc.

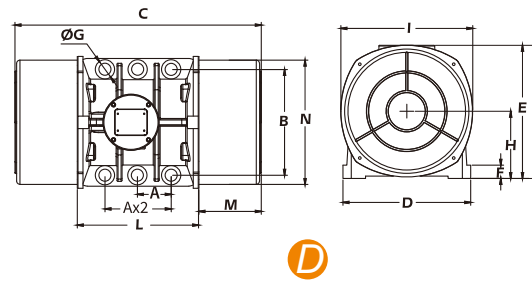
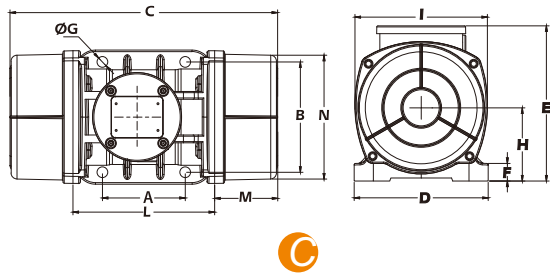
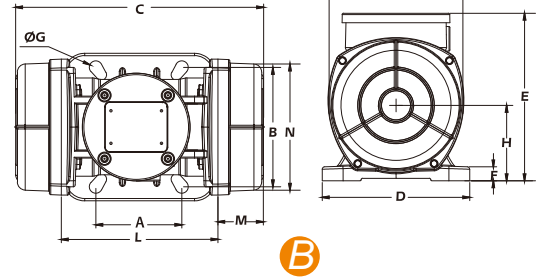
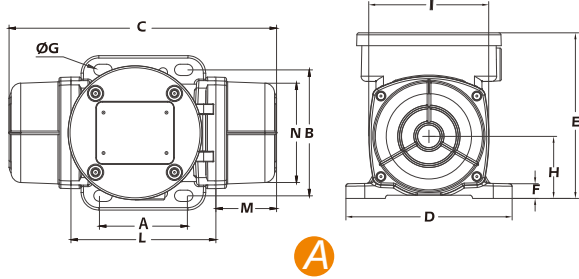


THREE PHASE (220V/380V) 2 POLES 3000/3600RPM 50/60HZ



Model	Voltage	Current	Input power	Force	Weight	Size
	(V)	A.Max(Y)	(KW)	(KN)	(KG)	
MV40/3	220/380	0.13	0.05	0.3	2.4	size1
MV60/3	220/380	0.16	0.08	0.7	4.6	size10
MV100/3	220/380	0.19	0.1	1	4.7	size10
MV200/3	220/380	0.35	0.18	2	6.3	size20
MV300/3	220/380	0.52	0.27	3	9.9	size30
MV400/3	220/380	0.58	0.3	4	10.2	size30
MV500/3	220/380	0.96	0.5	5	16.7	size40
MV700/3	220/380	1.25	0.66	7	17.2	size40
MV800/3	220/380	1.45	0.75	8	21.8	size50
MV1200/3	220/380	1.85	0.95	10	22.4	size50
MV1300/3	220/380	2.44	0.3	13	23.0	size50
MV1600/3	220/380	2.94	1.5	16	53.5	size60
MV1800/3	220/380	3.75	1.8	18	54.5	size60
MV2000/3	220/380	4.07	2	20	55	size60
MV2200/3	220/380	4.07	2	22	55.5	size60
MV2300/3	220/380	4.44	2.4	23	57	size60
MV3200/3	220/380	5.3	2.9	32	103	size75
MV4000/3	220/380	5.3	2.9	40	107	size75
MV5000/3	220/380	7.22	4	50	111.2	size75
MV6500/3	380/660	9.4	5.5	65	230	size85
MV9000/3	380/660	17.8	10	90	241	size85
MV12000/3	380/660	19	12.5	120	280	size90
MV15000/3	380/660	27.5	18.8	150	340	size90

*Special voltage and frequency can be customized



⊗ Mounting Dimension Unit: mm

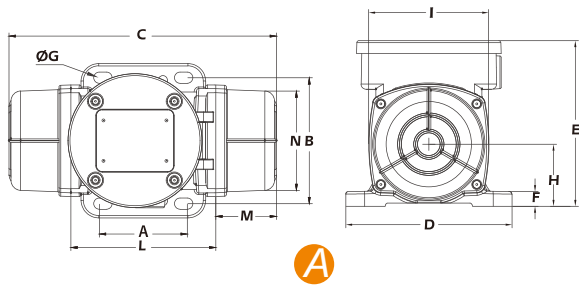
Model	A	B	G	C	D	E	F	H	I	L	M	N	Cable gland	Fig
M40/3	28-37 62	91 85-91	9	175	110	96	12	37.5	68	103	36	65.5	M16X1.5	I
MV60/3	62-74	106	9	215	130	131	11	47	94	121	47	88	M16×1.5	A
MV100/3	62-74	106	9	225	130	131	11	47	94	121	52	88	M16×1.5	A
MV200/3	62-74	106	9	233	130	155	13	63.5	119	123	55	111	M20×1.5	A
MV300/3	90	125	13	257	155	175	14	78	142	163	47	134	M20×1.5	B
MV400/3	90	125	13	257	155	175	14	78	142	163	47	134	M20×1.5	B
MV500/3	105	140	13	338	170	197	22	92.5	168	178	80	159	M20×1.5	C
MV700/3	105	140	13	338	170	197	22	92.5	168	178	80	159	M20×1.5	C
MV800/3	120	170	17	325	208	210	24	95	180	205	60	170	M20×1.5	C
MV1200/3	120	170	17	325	208	210	24	95	180	205	60	170	M20×1.5	C
MV1300/3	120	170	17	325	208	210	24	95	180	205	60	170	M20×1.5	C
MV1600/3	140	190	17	416.5	230	262	30	122	237	224.5	96	222	M27×1.5	C
MV1800/3	140	190	17	416.5	230	262	30	122	237	224.5	96	222	M27×1.5	C
MV2000/3	140	190	17	416.5	230	262	30	122	237	224.5	96	222	M27×1.5	C
MV2200/3	140	190	17	416.5	230	262	30	122	237	224.5	96	222	M27×1.5	C
MV2300/3	140	190	17	416.5	230	262	30	122	237	224.5	96	222	M27×1.5	C
MV3200/3	155	255	25	526.5	308	318	34	148.5	281	278.5	124	264	M32×1.5	C
MV4000/3	155	255	25	526.5	308	318	34	148.5	281	278.5	124	264	M32×1.5	C
MV5000/3	155	255	25	526.5	308	318	34	148.5	281	278.5	124	264	M32×1.5	C
MV6500/3	200	320	28	629.5	388	402	42	203	400	369.5	130	378	M32×1.5	C
MV9000/3	200	320	28	629.5	388	402	42	203	400	369.5	130	378	M32×1.5	C
MV12000/3	125	380	39	665.5	446	415	42	206	400	405.5	130	378	M32×1.5	D
MV15000/3	125	380	39	665.5	446	415	42	206	400	405.5	130	378	M32×1.5	D

THREE PHASE (220V/380V) 4 POLES 1500/1800RPM 50/60HZ

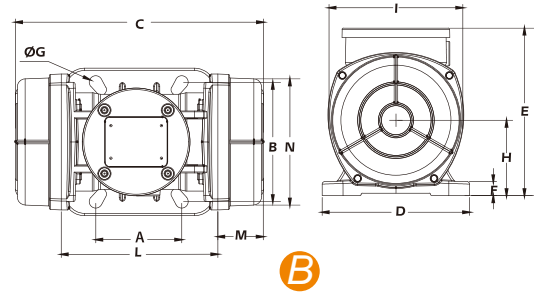


Model	Voltage	Current	Input power	Force	Weight	Size
	(V)	A.Max(Y)	(KW)	(KN)	(KG)	
MV40/15	220/380	0.26	0.04	0.3	4.6	size10
MV90/15	220/380	0.31	0.12	0.9	6.8	size20
MV200/15	220/380	0.49	0.16	2	12.8	size30
MV250/15	220/380	0.54	0.18	2.5	12.9	size30
MV300/15	220/380	0.62	0.20	3	13.8	size30
MV400/15	220/380	0.84	0.30	4	19.6	size40
MV500/15	220/380	1.06	0.35	5	21.0	size40
MV700/15	220/380	1.32	0.62	7	28.2	size50
MV800/15	220/380	1.36	0.65	8	29.1	size50
MV1100/15	220/380	1.4	0.65	11	36.5	size50
MV1400/15	220/380	1.78	0.90	14	60.5	size60
MV1700/15	220/380	2.09	1.15	17	62.5	size60
MV2400/15	220/380	3.2	1.6	24	68.0	size60
MV2500/15	220/380	3.4	1.8	25	97.5	size70
MV3000/15	220/380	3.68	1.9	30	110.0	size70
MV3800/15	220/380	4.15	2.2	38	130.0	size75
MV4300/15	220/380	4.5	2.5	43	145.0	size75
MV5500/15	380/660	6.5	3.6	55	193	size80
MV7200/15	380/660	8.5	5	72	253	size85
MV9000/15	380/660	13.4	7.5	90	269	size85
MV10000/15	380/660	14.4	7.8	100	329	size90
MV11500/15	380/660	15.5	9	116	445	size100
MV14500/15	380/660	18.5	11.5	141	460	size100

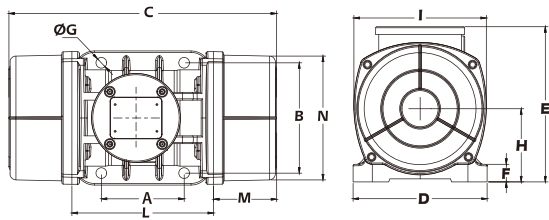
*Special voltage and frequency can be customized



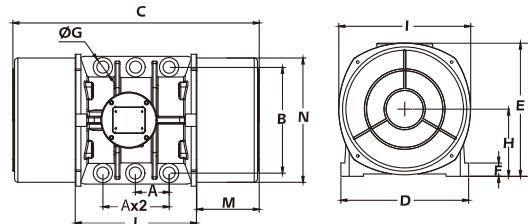
A



B



C



D

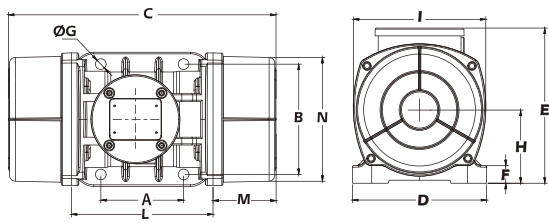
⊗ Mounting Dimension Unit: mm

Model	A	B	G	C	D	E	F	H	I	L	M	N	Cable gland	Fig
MV40/15	62-74	106	9	225	130	131	11	47	94	121	52	86	M16X1.5	A
MV90/15	62-74	106	9	233	130	155	13	63.5	119	123	55	111	M20X1.5	A
MV200/15	90	125	13	307	155	175	14	78	142	163	72	134	M20X1.5	B
MV250/15	90	125	13	307	155	175	14	78	142	163	72	134	M20X1.5	B
MV300/15	90	125	13	307	155	175	14	78	142	163	72	134	M20X1.5	B
MV400/15	105	140	13	338	170	197	22	92.5	168	178	80	159	M20X1.5	C
MV500/15	105	140	13	338	170	197	22	92.5	168	178	80	159	M20X1.5	C
MV700/15	120	170	17	395	208	210	24	95	180	205	95	170	M20X1.5	C
MV800/15	120	170	17	395	208	210	24	95	180	205	95	170	M20X1.5	C
MV1100/15	120	170	17	457	208	210	24	95	180	205	126	170	M20X1.5	C
MV1400/15	140	190	17	444.5	230	262	30	122	237	224.5	110	222	M27X1.5	C
MV1700/15	140	190	17	464.5	230	262	30	122	237	224.5	120	222	M27X1.5	C
MV2400/15	140	190	17	514.5	230	262	30	122	237	224.5	145	222	M27X1.5	C
MV2500/15	155	225	25	558.5	308	318	34	148.5	281	278.5	140	264	M32X1.5	C
MV3000/15	155	225	25	558.5	308	318	34	148.5	281	278.5	140	264	M32X1.5	C
MV3800/15	155	255	25	588.5	308	318	34	148.5	281	278.5	155	264	M32X1.5	C
MV4300/15	155	255	25	602.5	308	318	34	148.5	281	278.5	162	264	M32X1.5	C
MV5500/15	180	280	26	621.5	335	353	35	170	335	321.5	150	311	M32X1.5	C
MV7200/15	200	320	28	629.5	388	402	42	203	400	369.5	130	378	M32X1.5	C
MV9000/15	200	320	28	629.5	388	402	42	203	400	369.5	130	378	M32X1.5	C
MV10000/15	125	380	39	745.5	446	415	42	206	400	405.5	170	378	M32X1.5	D
MV11500/15	140	440	45	906	530	484	37	232	445	486	210	424	M32X1.5	E
MV14500/15	140	440	45	906	530	484	37	232	445	486	210	424	M32X1.5	E

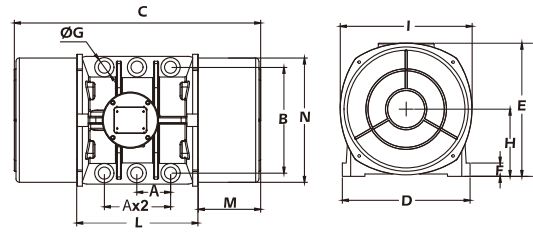
THREE PHASE (220V/380V) 6 POLES 1000/1200RPM 50/60HZ



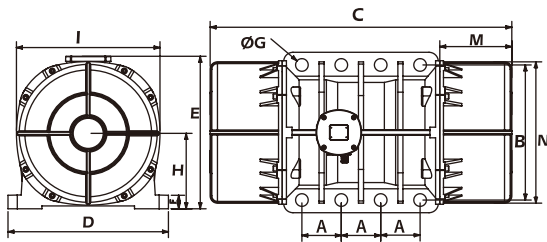
Model	Voltage	Current	Input power	Force	Weight	Size
	(V)	A.Max(Y)	(KW)	(KN)	(KG)	
MV50/1	220/380	0.38	0.12	0.5	13.1	size30
MV100/1	220/380	0.42	0.12	1	13.8	size30
MV200/1	220/380	0.48	0.18	1.8	21.0	size40
MV300/1	220/380	0.67	0.35	3	29.1	size50
MV400/1	220/380	0.78	0.37	4	33.3	size50
MV500/1	220/380	1.2	0.55	5	36.5	size50
MV800/1	220/380	1.26	0.75	7.8	62.5	size60
MV1100/1	220/380	1.42	0.75	11	80.0	size60
MV1400/1	220/380	1.95	1	14	82.0	size60
MV1500/1	220/380	2	1	15	84.0	size60
MV1600/1	220/380	2.06	1.10	16	86.0	size60
MV1620/1	220/380	2.06	1.1	16	127.0	size70
MV2100/1	220/380	2.88	1.5	21	129.0	size70
MV2600/1	220/380	3.63	1.96	26	143.0	size75
MV3000/1	220/380	4.17	2.2	30	152.0	size75
MV3800/1	220/380	5.5	2.5	38	216.0	size80
MV4700/1	220/380	6.5	3.2	47	231.0	size80
MV5200/1	220/380	6.92	3.8	52	280.0	size85
MV6500/1	220/380	7.6	4.3	65	305	size85
MV8000/1	380/660	12.6	7.1	80	325	size85
MV9000/1	380/660	13.2	7.5	90	338	size85
MV10000/1	380/660	14	7.6	100	386	size60
MV13000/1	380/660	16.4	10	130	422	size90
MV15000/1	380/660	18	11	144	672	size105
MV17500/1	380/660	21	12	176	744	size105
MV19500/1	380/660	24	12	199	768	size105
MV22000/1	380/660	28	13.95	223	916	size110
MV25000/1	380/660	28	13.95	250	994	size110
MV30000/1	380/660	52.96	22	300	1290	size120



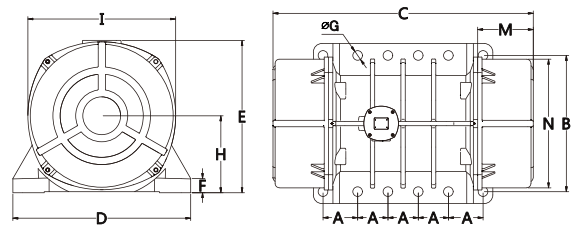
C



D



E



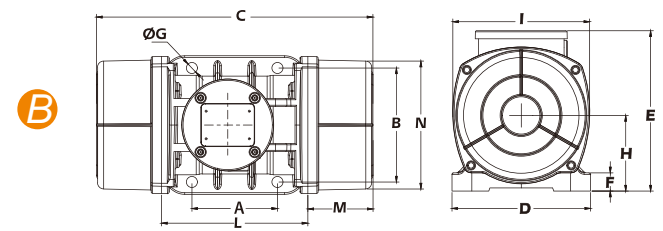
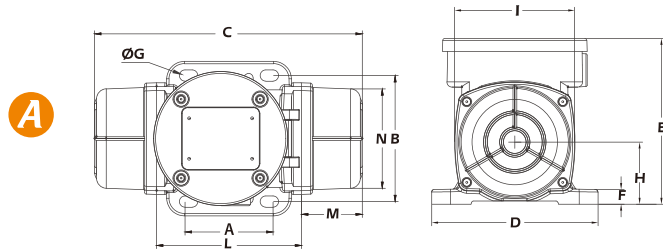
H

⊗ Mounting Dimension Unit: mm

Model	A	B	G	C	D	E	F	H	I	L	M	N	Cable gland	Fig
MV50/1	90	125	13	307	155	175	14	78	142	163	72	134	M20×1.5	B
MV100/1	90	125	13	307	155	175	14	78	142	163	72	134	M20×1.5	B
MV200/1	105	140	13	338	170	197	22	92	168	178	80	159	M20×1.5	C
MV300/1	120	170	17	396	208	210	24	95	180	205	95	170	M20×1.5	C
MV400/1	120	170	17	458	208	210	24	95	180	205	126	170	M20×1.5	C
MV500/1	120	170	17	458	208	210	24	95	180	205	126	170	M20×1.5	C
MV800/1	140	190	17	464.5	230	262	30	122	237	224.5	120	222	M27×1.5	C
MV1100/1	140	190	17	514.5	230	262	30	122	237	224.5	145	222	M27×1.5	C
MV1400/1	140	190	17	564.5	230	262	30	122	237	224.5	170	222	M27×1.5	C
MV1500/1	140	190	17	564.5	230	262	30	122	237	224.5	170	222	M27×1.5	C
MV1600/1	140	190	17	564.5	230	262	30	122	237	224.5	170	222	M27×1.5	C
MV1620/1	155	225	25	558.5	308	318	34	148.5	281	278.5	140	264	M32×1.5	C
MV2100/1	155	225	25	602.5	308	318	34	148.5	281	278.5	162	264	M32×1.5	C
MV2600/1	155	255	25	698.5	308	318	34	148.5	281	278.5	210	264	M32×1.5	C
MV3000/1	155	255	25	698.5	308	318	34	148.5	281	278.5	210	264	M32×1.5	C
MV3800/1	180	280	26	687.5	335	353	35	170	335	321.5	183	311	M32×1.5	C
MV4700/1	180	280	26	737.5	335	353	35	170	335	321.5	208	311	M32×1.5	C
MV5200/1	200	320	28	709.5	388	402	42	203	400	369.5	170	378	M32×1.5	C
MV6500/1	200	320	28	709.5	388	402	42	203	400	369.5	170	378	M32×1.5	C
MV8000/1	200	320	28	779.5	388	402	42	203	400	369.5	205	378	M32×1.5	C
Mv9000/1	200	320	28	779.5	388	402	42	203	400	369.5	205	378	M32×1.5	C
MV10000/1	125	380	39	925.5	446	415	42	206	400	405.5	260	378	M32×1.5	D
MV13000/1	125	380	39	965.5	446	415	42	206	400	405.5	280	378	M32×1.5	D
MV15000/1	140	480	45	1072	570	540	48	268	510	560	256	490	M32×1.5	E
MV17500/1	140	480	45	1072	570	540	48	268	510	560	256	490	M32×1.5	E
MV19500/1	140	480	45	1072	570	540	48	268	510	560	256	490	M32×1.5	E
MV22000/1	140	520	45	1130	620	590	42	297	560	560	285	530	M32×1.5	E
MV25000/1	140	520	45	1130	620	590	42	297	560	560	285	530	M32×1.5	E
MV30000/1	140	600	45	1208.5	740	627	58	320	615	694.5	257	595	M32×1.5	H



SINGLE PHASE (220V) 2 POLES 3000RPM 50HZ



Model	Voltage	Current	Input power	Force	Weight	Size
	(V)	A.Max	(KW)	(KN)	(KG)	
MV60/3M	220V	0.43	0.08	0.6	4.5	size10
MV100/3M	220V	0.54	0.1	1	5.1	size10
MV200/3M	220V	0.71	0.18	2	6.8	size20
MV300/3M	220V	1.58	0.29	3	10	size30
MV400/3M	220V	1.68	0.31	4	10.8	size30

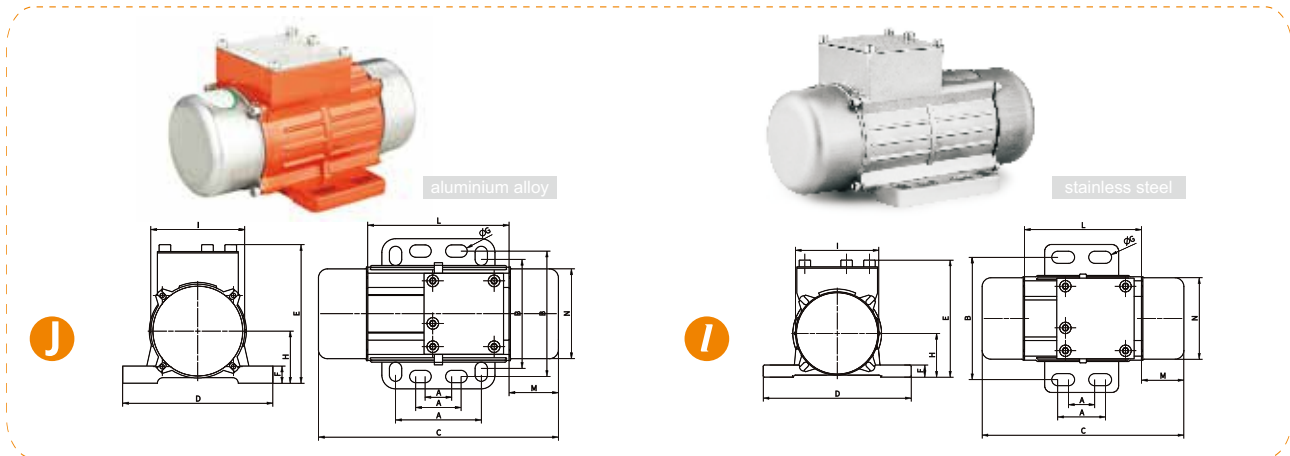
*Special voltage and frequency can be customized

⊗ Mounting Dimension Unit: mm

Model	A	B	G	C	D	E	F	H	I	L	M	N	Cable gland	Fig
MV60/3M	62-74	106	9	215	130	131	11	47	94	121	47	88	M16×1.5	A
MV100/3M	62-74	106	9	225	130	131	11	47	94	121	52	88	M16×1.5	A
MV200/3M	62-74	106	9	233	130	155	13	63.5	119	123	55	111	M20×1.5	A
MV300/3M	90	125	13	257	155	175	14	78	142	163	47	134	M20×1.5	B
MV400/3M	90	125	13	257	155	175	14	78	142	163	47	134	M20×1.5	B



MICRO VIBRATION MOTOR (ALUMINIUM)



⊗ Single Phase 110V/220V 2 Poles 3000/3600RPM 50/60Hz

Model	Voltage (V)	Current (A)	Input power (KW)	RPM		Force (KG)	Size
				50Hz	60Hz		
MV40/2M-2	220/110	0.148/0.351	0.04	3000	3600	46	size2
MV40/2SM-3	220/110	0.148/0.351	0.04	3000	3600	46	size3

*Special voltage and frequency can be customized

⊗ Three Phase 220V/380V 2 Poles 3000/3600RPM 50/60Hz

Model	Voltage (V)	Current (A)	Input power (KW)	RPM		Force (KG)	Size
				50Hz	60Hz		
MV40/2-2	380/220	0.121/0.152	0.04	3000	3600	46	size2
MV40/2S-3	380/220	0.121/0.152	0.04	3000	3600	46	size3

⊗ Mounting Dimension Unit: mm

Model	A	B	C	D	E	F	G	H	I	J	K	L	M	N
MV40/2M-2	28-37	91	150	110	86	9	9	32	61.5	89	30.5	60.5	M16x1.5	J
MV40/2-2														
MV40/2SM-3	28-37	91	175	110	71.5	9	8.5	35.75	69	103	36	60.5	M16x1.5	I
MV40/2S-3	62	85-91												